



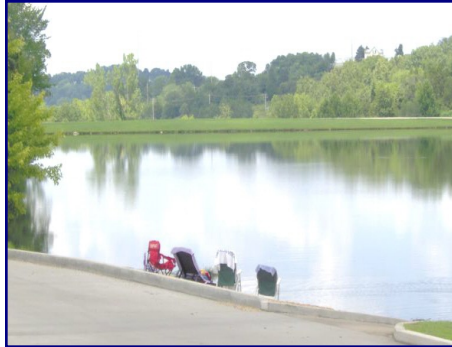
1202 Market Street  
P.O. Box 294  
Hermann, MO 65041  
www.hartmanrealestate.com  
Phone: 573-486-2927  
Fax: 573-486-5042  
info@hartmanrealestate.com

## **SEE TAL LAKE ESTATES**

12 ACRE STOCKED LAKE SUBDIVISION LOCATED ON THE EDGE OF HERMANN  
CITY UTILITIES AVAILABLE, PARK AREA WITH PAVILION & RESTROOM,  
BEACH & SWIM AREA WITH FLOATING DOCK

LOTS 3E and 4E     .713/ACRE TOTAL     \$12,950.00

LISTING AGENT: DAVID HARTMAN     LISTING #DH802     MLS #15030564



**Directions:** From Hermann take Highway 19 South approximately 1 mile to See Tal Estates on the left.  
Go right into subdivision to Lots 3E & 4E on Epple Fricke Drive on the left. Sign is up.



Information herein is not warranted & subject to change without notice. We assume no liability for errors.

