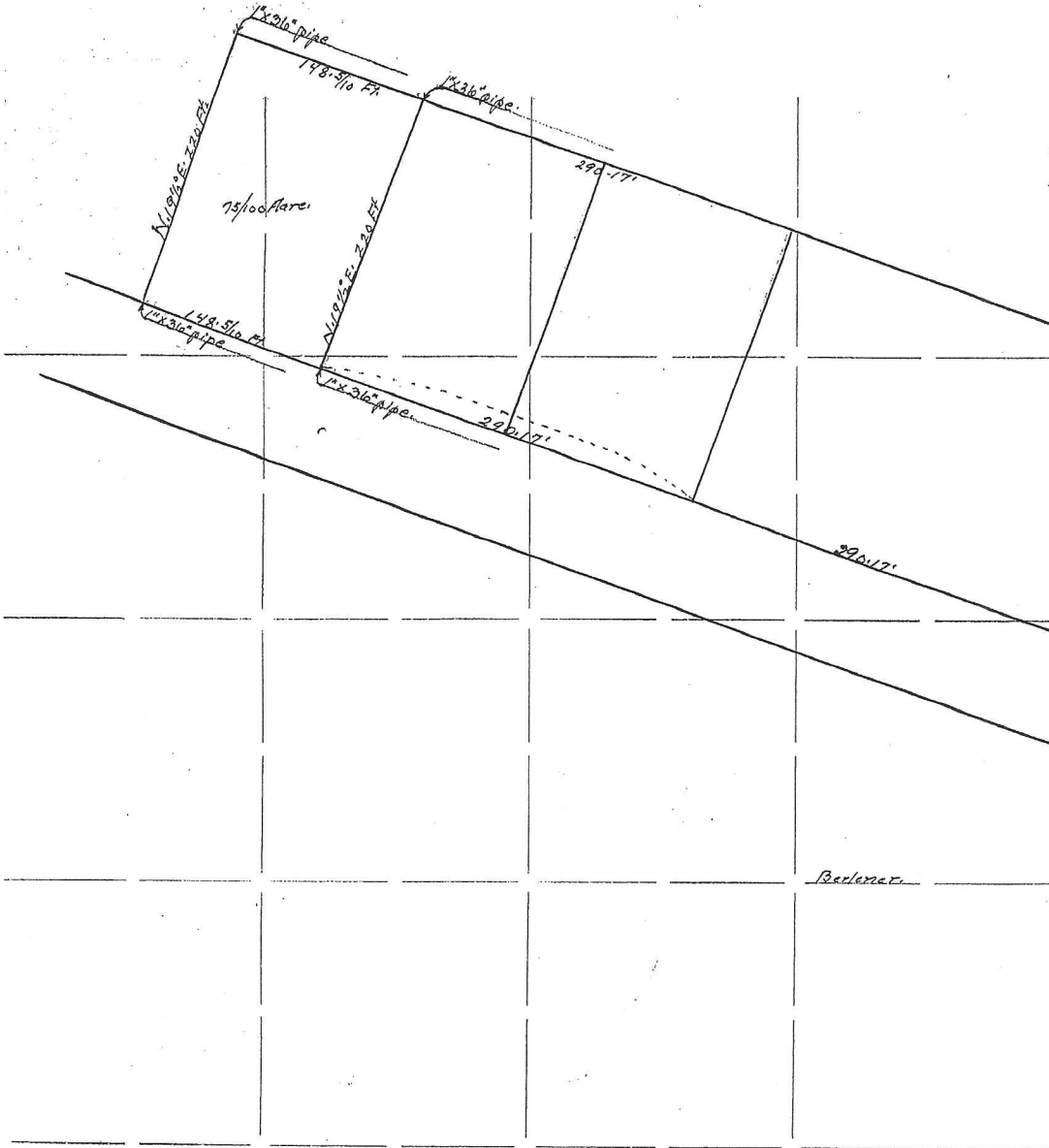


SURVEYOR'S RECORD

PLAT # 3535

N. E. 1/4 of S. W. 1/4 Section 32 Township 46 N. Range 4 West of 5th P.



100 Ft.
Scale, 10 Chains to 1 Inch.

Va. G. O. O.

COUNTY SURVEYOR

SURVEYOR'S RECORD

FIELD NOTES

No. of Survey 3535 Date March 26 1957

Survey for George Dechlerger

Chaimmen sworn assisted by George Dechlerger and Louis Schuety

Point Established N.E. 1/4 of S.W. 1/4 Sec. 3. 2 Twp. 46N. Range 4west of 5th P. M.

Survey as per plat

State of Missouri } ss.

County of Gasconade } I hereby certify that the foregoing is a correct and true

record and plat of survey no. 3535 as made by me on above date. Witness my

hand and seal this 28th day of December 1957. [Signature] County Surveyor.